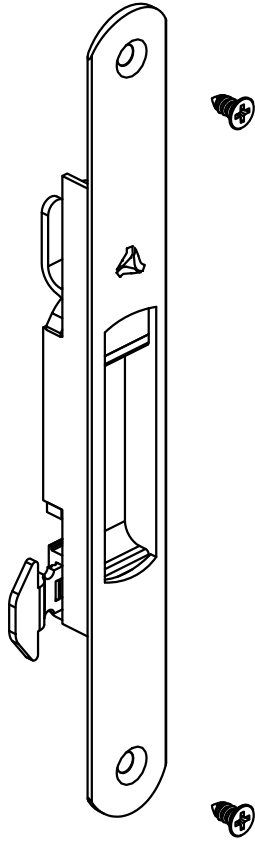
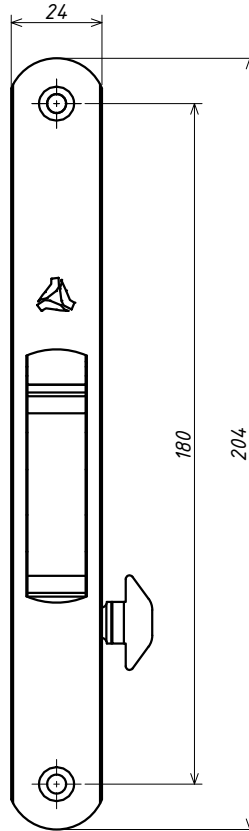
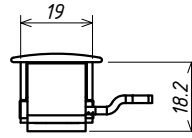
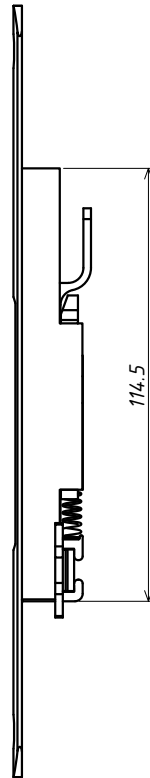


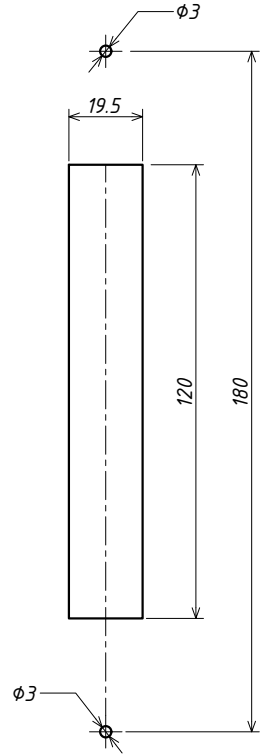
PERSPECTIVA:
(sem escala)



DIMENSÕES:
(escala 1:2)



USINAGEM:
(escala 1:2)



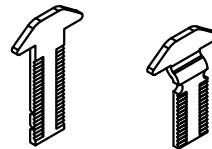
CÓDIGO:	APLICAÇÃO TRAVA / LINHAS
LIN-03	Inova® e Master®
LIN-04	25®, 30®, Suprema®, Gold®, Mega 32, Absoluta® e Nostra 32® MP®, Hydro Official®, Madeira, SP20® e D'oro®

CARACTERÍSTICAS:

Componentes:	Matéria-prima:
Estrutura	Alumínio
Lingueta	Aço Inox
Parafusos	Aço Inox
Limitador	Poliamida
Acabamentos	Poliamida

Acabamento		
Preto	Fosco	Branco

Embalagem	20 Fechos
	20 Linguetas
	40 Parafusos



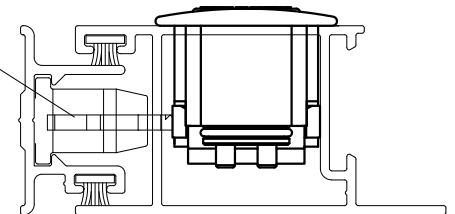
CÓD: LIN-04 CÓD: LIN-03

ATENÇÃO:

VERIFICAR QUAL O TIPO DE TRAVA IDEAL PARA O PROJETO

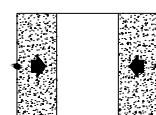
DETALHE DE APLICAÇÃO:
(sem escala)

CÓD: LIN-04



ACABAMENTOS AMAIDEIRADOS CONSULTAR PÁGINA 04 NO CATÁLOGO TÉCNICO DE COMPONENTES.

CÓDIGO	ACABAMENTO
FEC-1041 (Manual)	Preto
FEC-10410 (Manual)	Fosco
FEC-1041EB (Manual)	Branco
FEC-1042 (Autom.)	Preto
FEC-10420 (Autom.)	Fosco
FEC-1042EB (Autom.)	Branco



JANELAS
E PORTAS
DE CORRER